

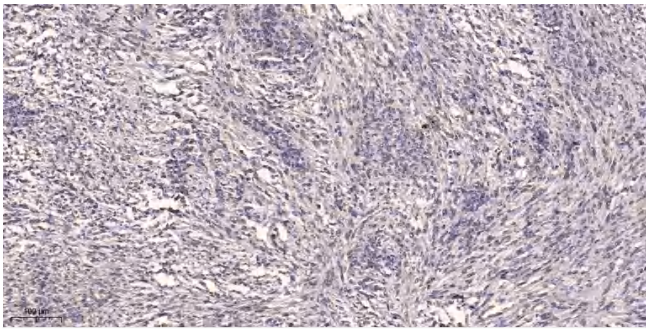


Podocan Polyclonal Antibody

Catalog No	YP-Ab-04096
Isotype	IgG
Reactivity	Human;Rat;Mouse;
Applications	IHC;IF;ELISA
Gene Name	PODN
Protein Name	Podocan
Immunogen	Synthesized peptide derived from the C-terminal region of human Podocan.
Specificity	Podocan Polyclonal Antibody detects endogenous levels of Podocan protein.
Formulation	Liquid in PBS containing 50% glycerol, 0.5% BSA and 0.02% sodium azide.
Source	Polyclonal, Rabbit,IgG
Purification	The antibody was affinity-purified from rabbit antiserum by affinity-chromatography using epitope-specific immunogen.
Dilution	IHC: 1/100 - 1/300. ELISA: 1/40000.. IF 1:50-200
Concentration	1 mg/ml
Purity	≥90%
Storage Stability	-20°C/1 year
Synonyms	PODN; SLRR5A; Podocan
Observed Band	
Cell Pathway	[Isoform 1]: Secreted, extracellular space, extracellular matrix.; [Isoform 2]: Cytoplasm .; [Isoform 3]: Cytoplasm .; [Isoform 4]: Cytoplasm .
Tissue Specificity	Kidney, heart, liver, pancreas and vascular smooth muscle cells. Also detected in aortic intima (at protein level).
Function	PTM:N-glycosylated.,similarity:Belongs to the small leucine-rich proteoglycan (SLRP) family. Class V subfamily.,similarity:Contains 20 LRR (leucine-rich) repeats.,subunit:Binds to type I collagen.,tissue specificity:Kidney, heart, liver, pancreas and vascular smooth muscle cells.,
Background	The protein encoded by this gene is a member of the small leucine-rich repeat protein family and contains an amino terminal CX3CXCX7C cysteine-rich cluster followed by a leucine-rich repeat domain. Studies suggest that this protein could function to inhibit smooth muscle cell proliferation and migration following arterial injury. [provided by RefSeq, Jul 2016],
matters needing attention	Avoid repeated freezing and thawing!

**Usage suggestions**

This product can be used in immunological reaction related experiments. For more information, please consult technical personnel.

Products Images

Immunohistochemical analysis of paraffin-embedded human small intestinal carcinoma tissue. 1,primary Antibody was diluted at 1:200(4° overnight). 2, Sodium citrate pH 6.0 was used for antigen retrieval(>98° C,20min). 3,Secondary antibody was diluted at 1:200